

Disclaimer:

The views expressed in this document are those of the author, and do not necessarily reflect the views and policies of the Asian Development Bank (ADB), its Board of Directors, or the governments they represent. ADB does not guarantee the accuracy of the data included in this document, and accept no responsibility for any consequence of their use. By making any designation or reference to a particular territory or geographical area, or by using the term “country” in this document, ADB does not intend to make any judgments as to the legal or other status of any territory or area.

Urban-Rural Partnerships in Europe

Rupert Kawka

Federal Institute for Research on Building,
Urban Affairs and Spatial Development

ADB-Tongji Urban Knowledge Sharing Workshop

November 12/14rd, 2014 in Shanghai



Federal Institute for
Research on Building,
Urban Affairs and
Spatial Development

within the Federal Office for
Building and Regional Planning



Concentration of megacities in Asia

Cities with at least 10 million inhabitants



Federal Institute for
Research on Building,
Urban Affairs and
Spatial Development

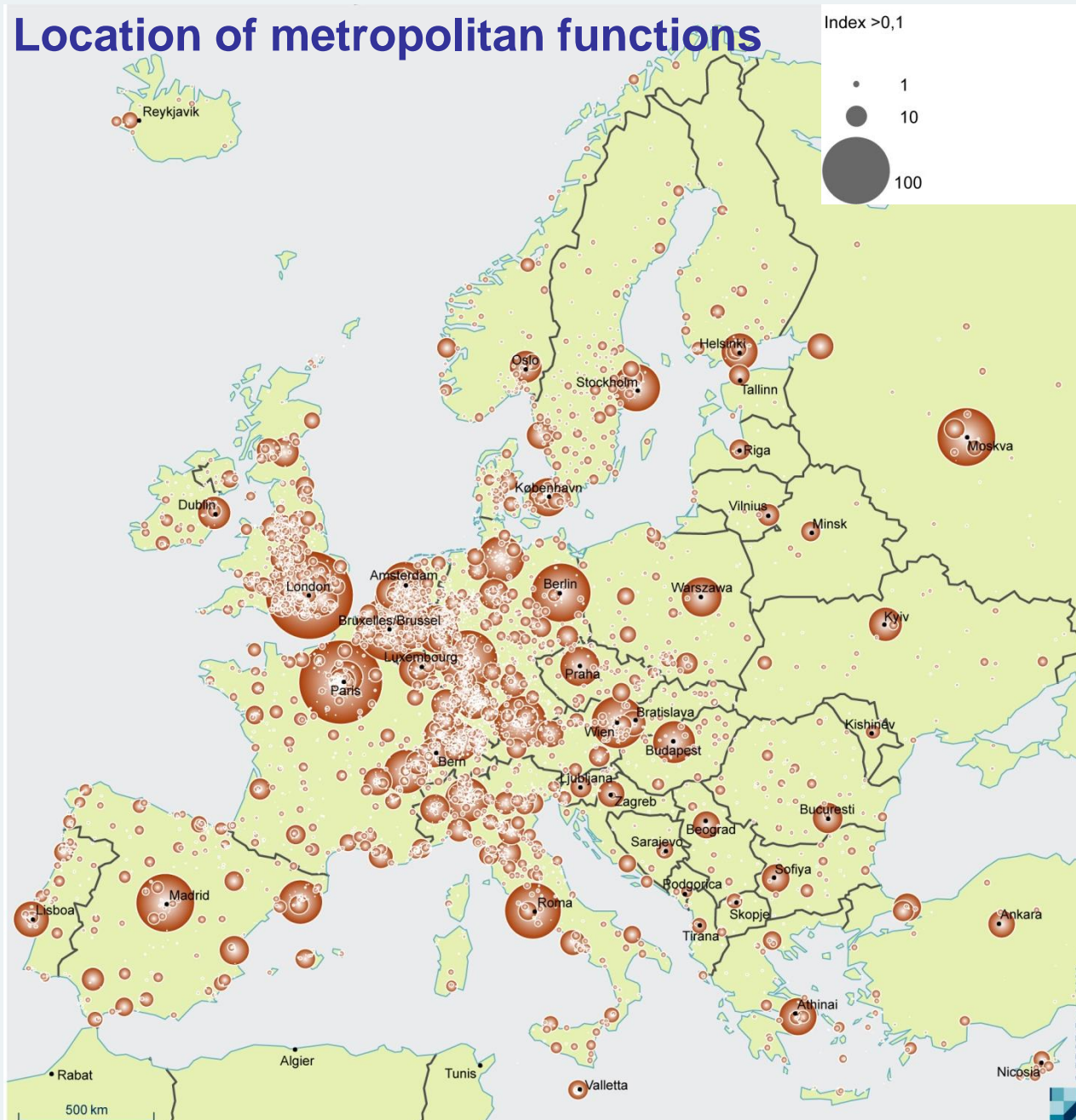
within the Federal Office for
Building and Regional Planning



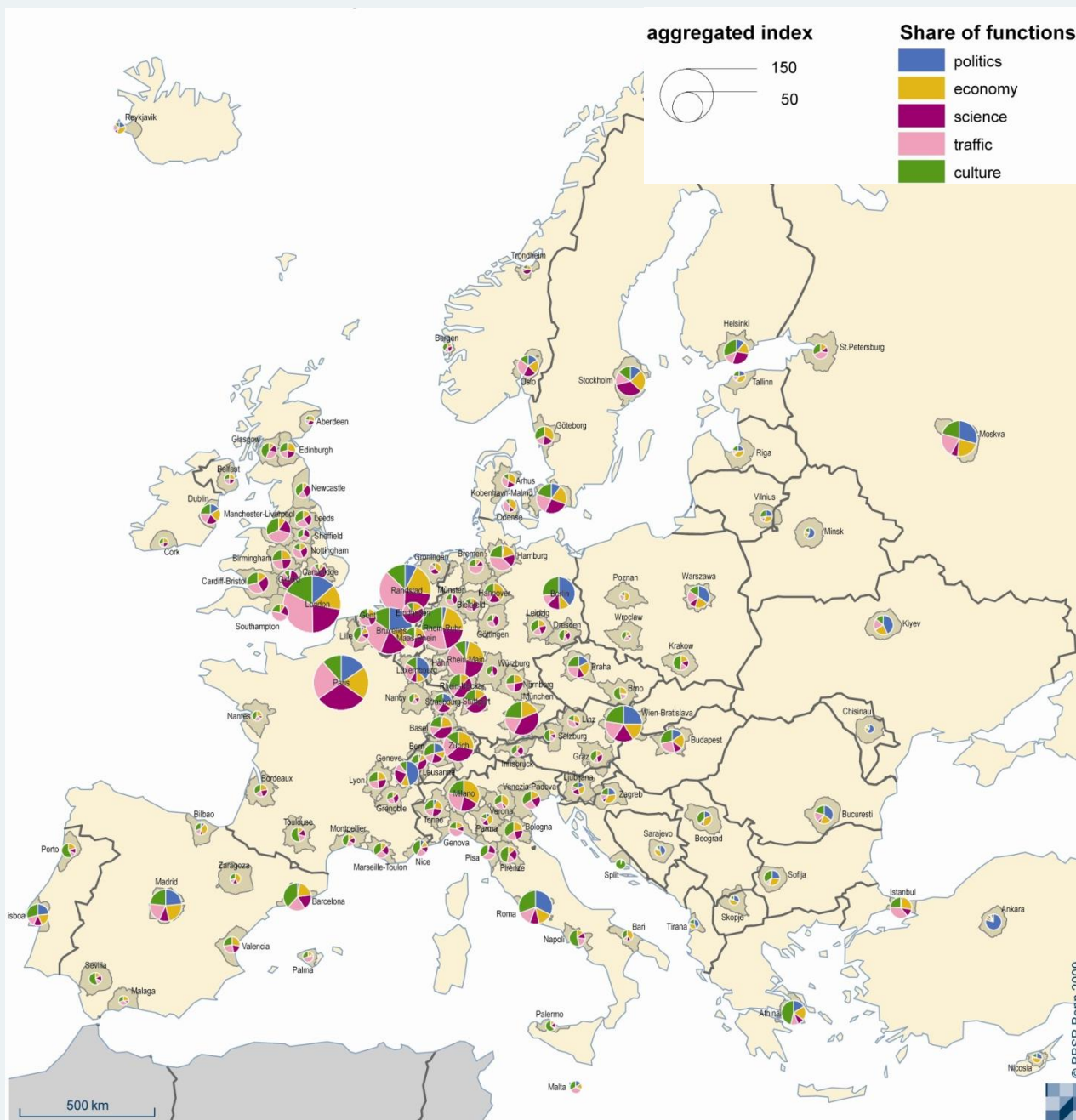
megacities
versus
global cities



Location of metropolitan functions



- 38 variables on politics, economy, research, traffic, culture
- 171,000 information for 8,500 locations



125 metropolitan areas

- 10 % of space
- 50 % of population
- 65 % of GDP
- 80 % of metropolitan functions

= GDP of Germany,
France, UK, Italy,
Spain



metropolregion nürnberg

KOMMEN. STAUNEN. BLEIBEN.

Stadt-Land-Partnerschaft als Erfolgsmodell



Federal Institute for
Research on Building,
Urban Affairs and
Spatial Development

within the Federal Office for
Building and Regional Planning



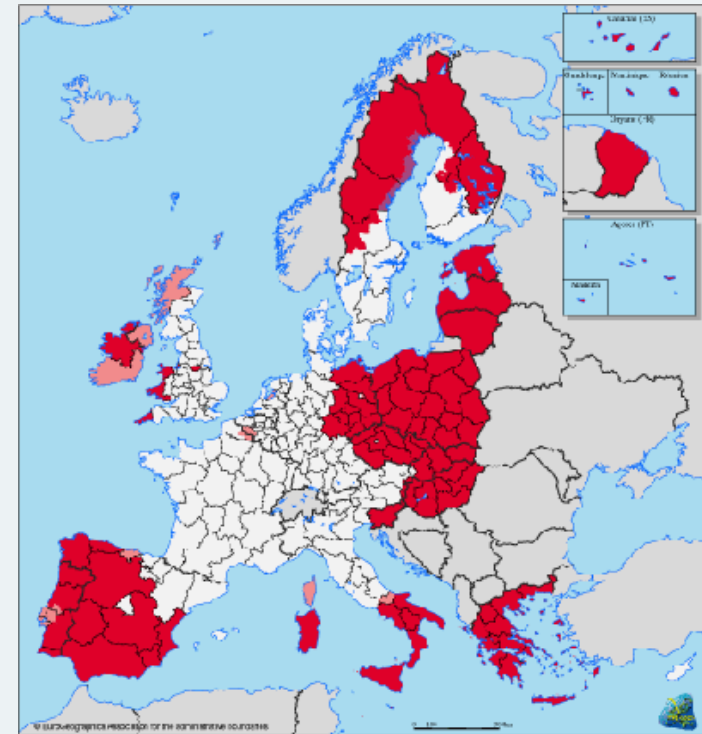
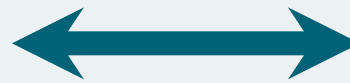
Brochure of the Metropolitan Regional of Nürnberg:

**“Urban-rural partnership as
a success model”**

**Global aspect: more visibility,
more power**

**Local effect: more balanced
development, more
acceptance**

Growth and balancing policy



- ongoing financial crisis
 - difficult public borrowing
 - growth regions in future recession
- ⇒ rural-urban partnerships as compromise between growth and balancing policy on regional level
- ⇒ contribution to Europe 2020, more efficient funding

Urban-rural partnerships – a topic in Germany and Europe

Leitbilder und Handlungsstrategien für die Raumentwicklung in Deutschland

Verabschiedet von der Ministerkonferenz für Raumordnung am 30. 06.2006



Bundesministerium
für Verkehr, Bau
und Stadtentwicklung



**Territoriale Agenda
der Europäischen Union**

Territoriale Agenda 2020 - Towards an Inclusive, Smart and Sustainable Europe of Diverse Regions



Territorial Agenda of the European Union 2020

Towards an Inclusive, Smart and Sustainable Europe of Diverse
Regions

agreed at the Informal Ministerial Meeting of Ministers responsible for Spatial
Planning and Territorial Development
on 19th May 2011 Gödöllő, Hungary

eu 2011.hu



Effective instruments supporting territorial development

Strengthening local development and urban dimension
within Cohesion Policy

Issue paper
September 2011

Partnership for sustainable rural-urban development: existing evidences

n° 2011.CE.16.0.AT.017



Federal Institute for
Research on Building,
Urban Affairs and
Spatial Development
within the Federal Office for
Building and Regional Planning



Deutscher Verband für Wohnungswesen,
Städtebau und Raumordnung e.V.



A realistic idea?

No

- different demands and goals
- different economic and administrative power
- additional administrative burden
- no statistically proven surplus value
- no altruism/prejudices



Yes

- connecting complementary, similar, same potentials
- co-operation for mutual benefit
- managing linkages for economic development and quality of life
- win-win situations and conflict management



From linkages to partnership

“quasinatural” linkages
sectoral partnership
integrated partnership



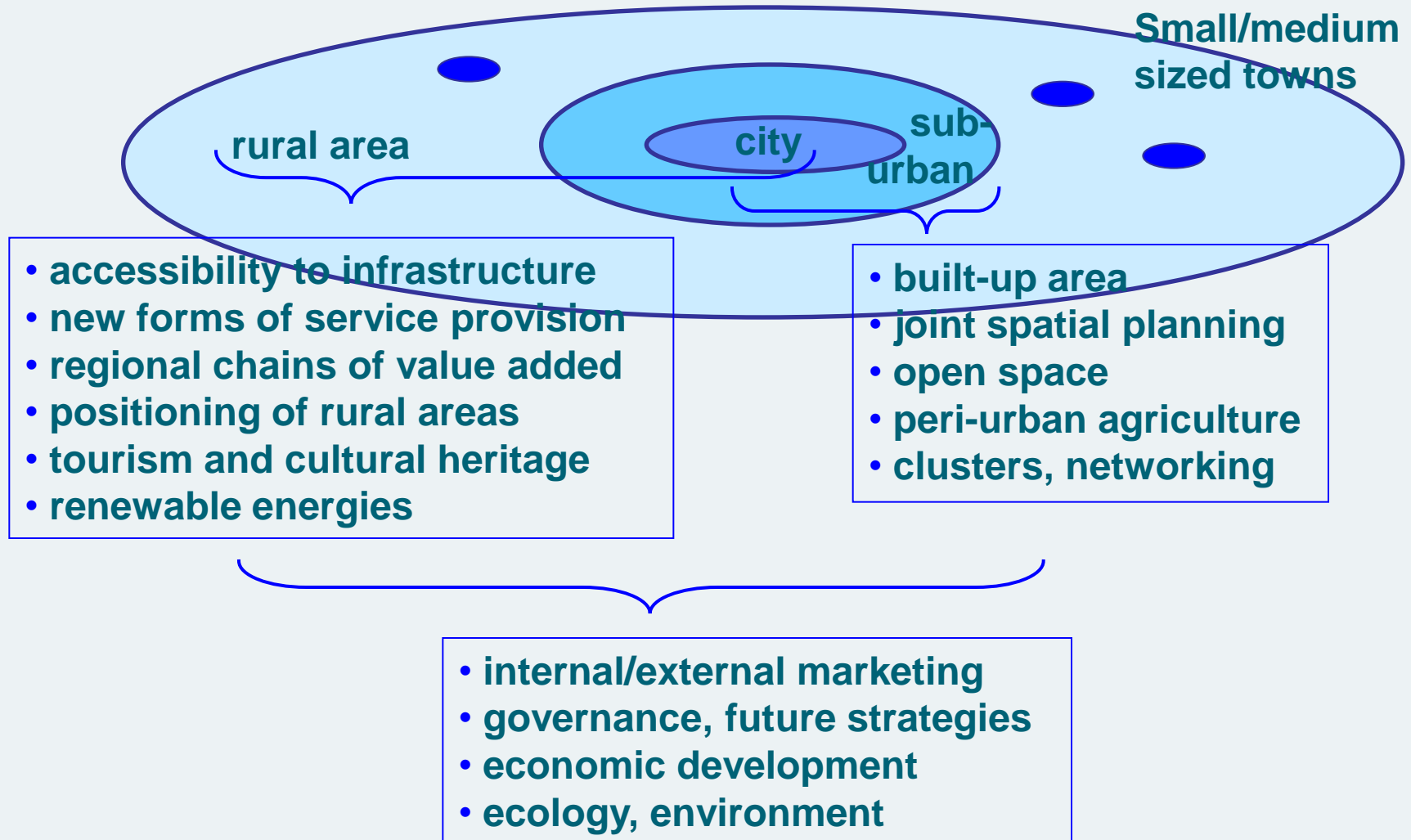
Yes

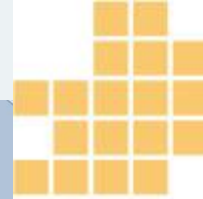
Sustainability?

Yes, only with effort

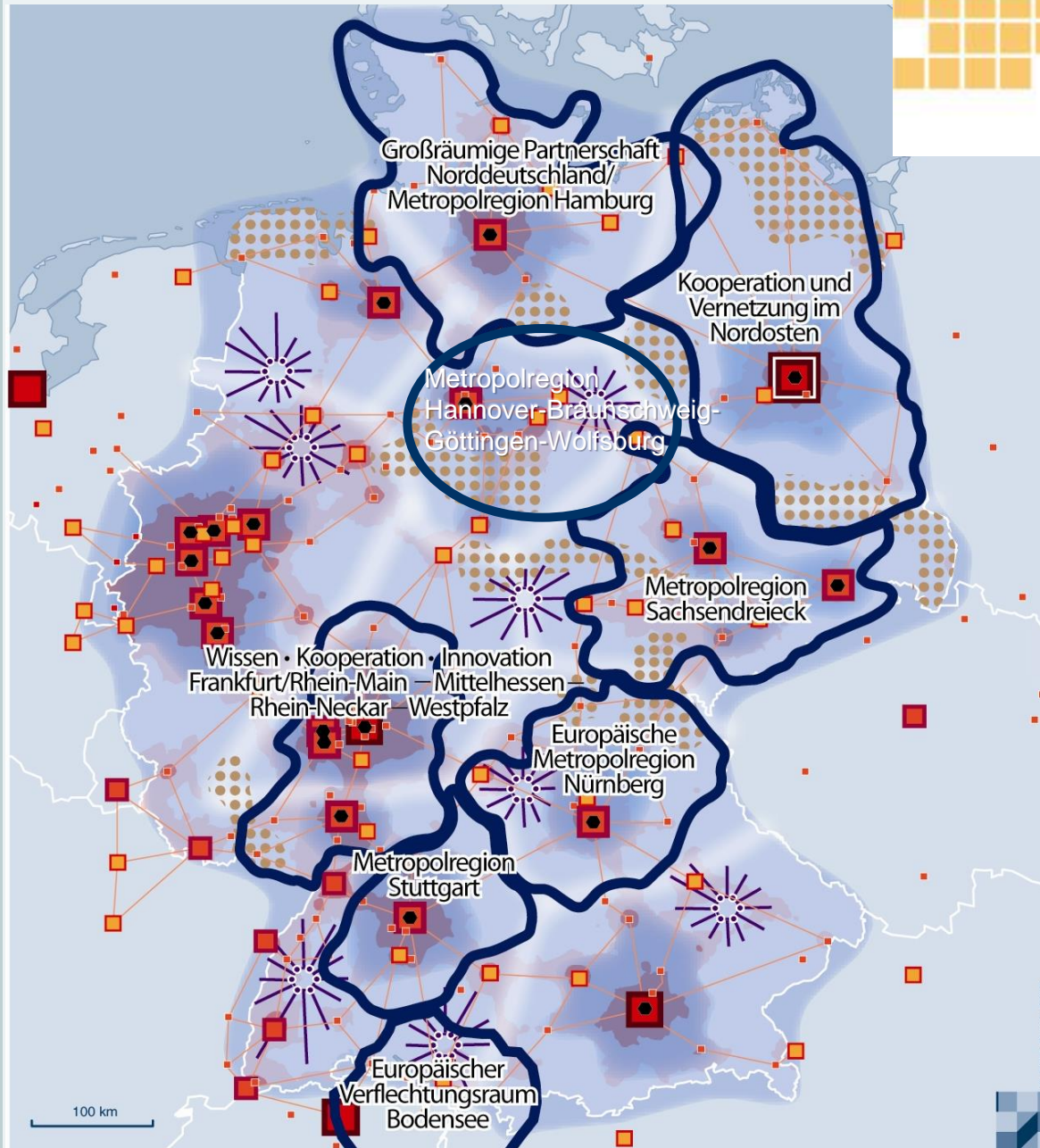


Topics and strategic/project space: Variable geometry





MORO



- 8 demonstration regions with ~ 45 projects, selected from ~ 70 ideas
- large variety of topics
- covering 52% of Germany with 48% of the population
- from 1/2008 to 6/2010 (+ 2nd phase till 2013)

Support (from federal level)

(Federal Ministry of Transport, Building and Urban Affairs
and Federal Office for Building and Regional Planning)

- project management for coordination, workshops and publications
- ~ 1.1 Mio for 5 years from federal level for regions and project management + ~ 1 Mio Euro from the regions themselves
- publications, meetings (3 times a year)
- analysis of the results and formulation of political advice, brochure (for download)



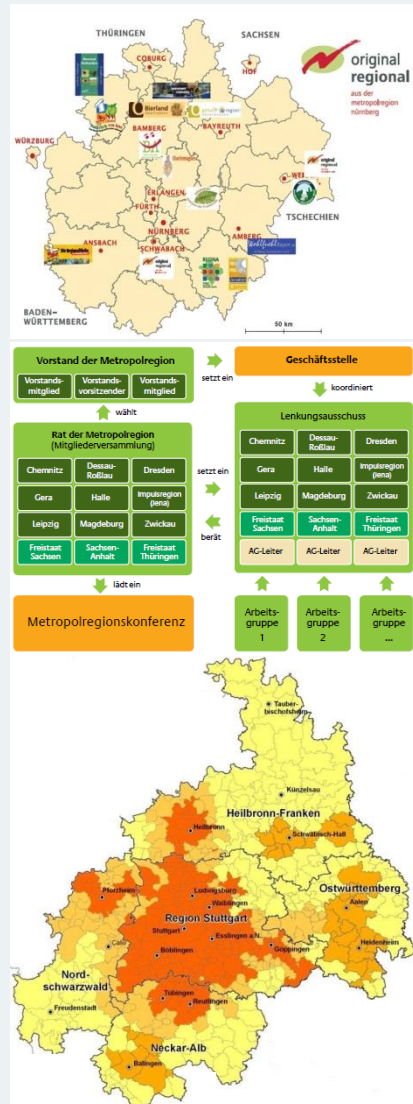
Urban-Rural Partnerships Growth and innovation through cooperation



Transport Mobility Housing Urban and Rural Areas Transport Mobility Housing
Urban and Rural Areas www.bmvbs.de Transport Mobility Housing Urban
and Rural Areas Transport Mobility Housing Urban and Rural Areas Transport



Some project examples



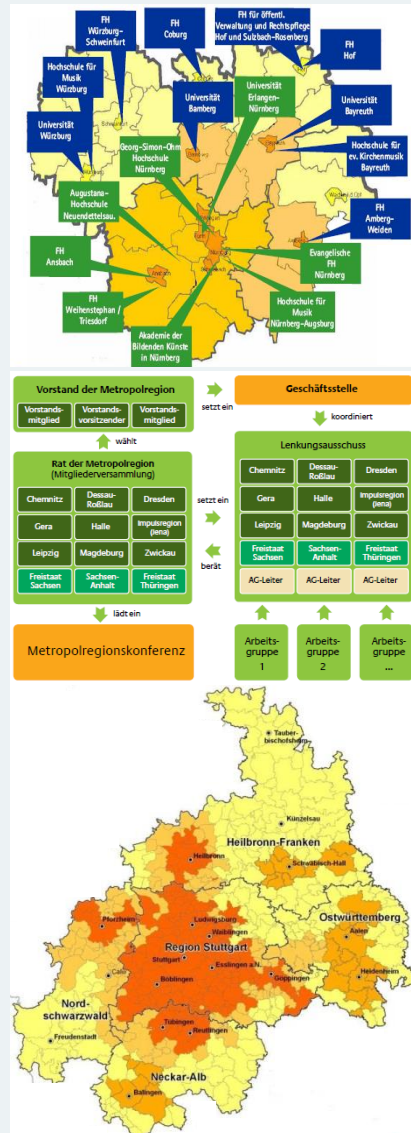
Regional chains of value added in **Nürnberg** region:
16 formerly independent partners promote regional
food products, Siemens canteen consumes for 4
Mio. Euro food

New governance model in **Central Germany**
Metropolitan Region: new members, new name,
new financial basis, new voting procedure,
integration of economy, academia, civil society

Joint spatial planning in **Stuttgart** region:
formerly 5 individual, now 1 joint development plan
matched concepts for logistics and regional trains



Some project examples (ctd.)



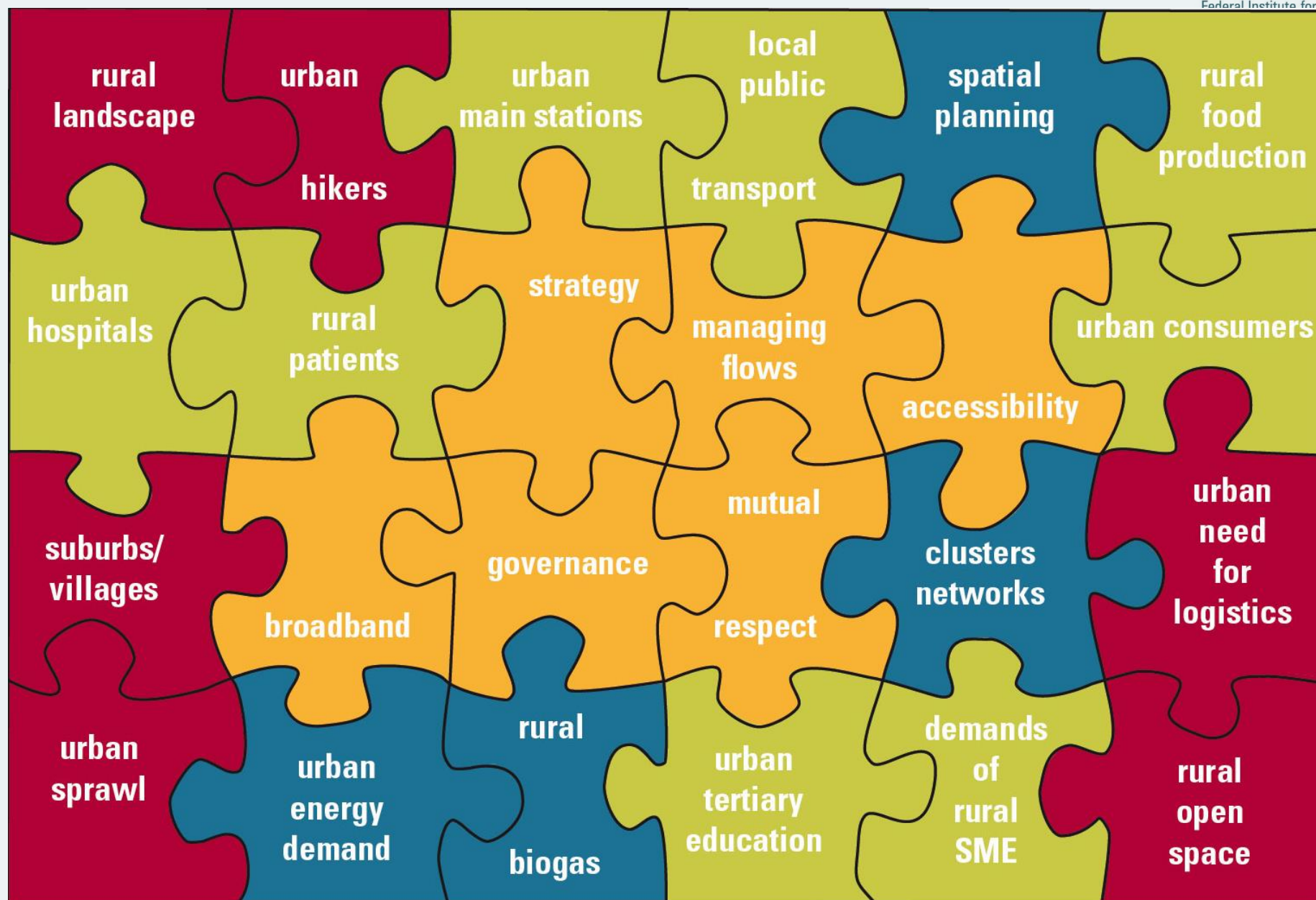
Clusters and networks **in all regions**, networking of networks, maritime economy, logistics, health, design, virtual engineering

Integration of rural areas in **Hamburg/Northern Germany**, survey and two conferences about rural needs and expectations, development of a strategy and charta

Transport infrastructure in many regions – on large scale (how to use transport corridors), on small scale (e.g. public transport from rural to urban regions), between different means of transport (e.g. ports, railway)

No cook-book possible





Thank you for your kind attention!

rupert.kawka@bbr.bund.de

Please feel free to contact me.