

SAAHAS
zeroWaste



Circular Economy Because Nature Knows No Waste
发展循环经济，大自然没有废弃物





Saahas Zero Waste is a social enterprise that provides **end-to-end waste management services** to bulk waste generators based on the principles of **circular economy**

Saahas零废弃物公司是一家社会企业，依据循环经济的原则，为大宗废弃物制造者提供端对端废弃物管理服务



What is Circular Economy? 循环经济是什么？

We strive to ensure zero waste to landfill by recovering value from waste

我们努力变废为宝，实现废弃物零填埋





Problem = Opportunity

问题=机遇

Our country has poor systems to manage 2 lakh tons of waste per day.
我们国家的管理系统不佳，每天只能管理
20万吨废弃物。

90% of resources can be recovered
from our waste.
废弃物中可以回收的资源达到90%。

Are you in compliance with the law? 你是否守法?

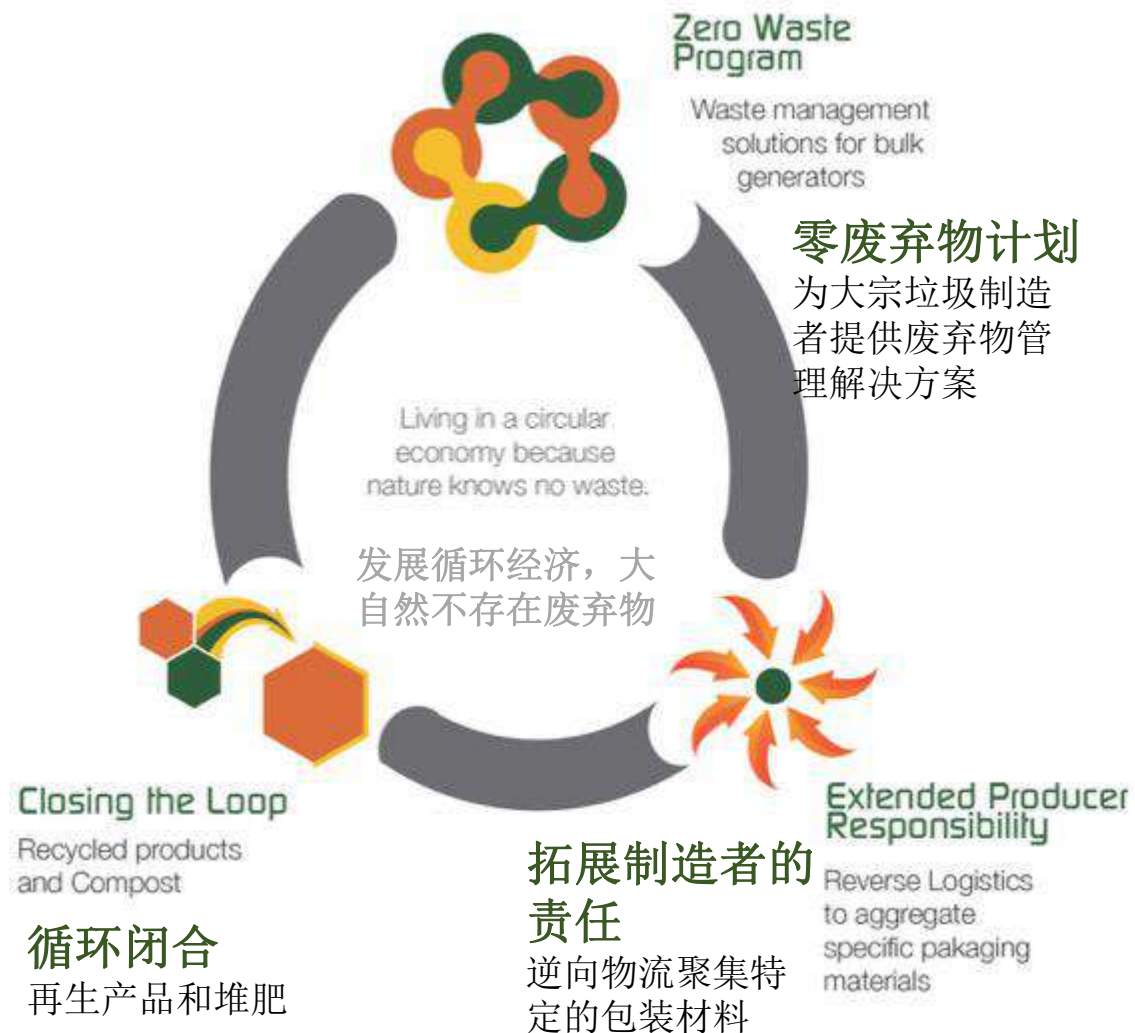
Waste management is a much regulated but little understood industry. 对废弃物管理产业的监管力度虽大但缺乏对其的理解

Here's what corporates need to do to comply: 以下是企业需要遵守的:

Relevant Law 相关法律	Waste category 废弃物类别	Legal Highlights 法律要点
Solid Waste Management Rules 2016 《固体废弃物管理法则》	Biodegradable (wet) 可生物降解的 (湿)	<ul style="list-style-type: none">• Segregation at source is mandated• 在源头进行强制性分类• Pay user fees for collection, processing and disposal• 垃圾分类、加工和处理都要支付使用费• Producers are responsible to collect and ensure safe disposal of plastic and e-wastes and (EPR)• 垃圾制造者负责收集废弃物, 并确保塑料、电子废弃物和乙丙橡胶 (EPR) 被安全处理• No waste shall be dumped and/or burnt• 不得倾倒和/或焚烧废弃物• If there is no space constraint bulk waste generators are required to process wet waste onsite• 如果没有空间限制, 大宗垃圾制造者需要到现场处理湿废弃物• Only non-recyclable, non-biodegradable (having calorific value of less than 1500K/cal/kg) and inert wastes and pre-processing rejects and residue to be landfilled.• 只有不可回收、不可生物降解 (热值低于1500K / cal / kg) 和惰性废弃物以及预处理废弃物和残留物才能填埋。
Solid Waste Management Rules 2016 《固体废弃物管理法则》	Non-biodegradable (dry) 不可生物降解的 (干)	
Plastic Waste Management Rules 2016 《塑料废弃物管理法则》	Plastic 塑料	
E-Waste (Management) Rules 2016 2016年《电子废弃物 (管理) 法则》	E-Waste 电子废弃物	
Construction and Demolition Waste Management Rules 2016 2016年《房屋拆除和建筑废弃物管理法则》	Construction and Demolition 房屋拆除和建筑	
Solid Waste Management Rules 2016 2016年《固体废弃物管理法则》	Domestic hazardous and sanitary wastes 家中有害废弃物和生活垃圾	

Our Solutions我们的解决方案

Our Approach 我们的方法



Our Services 我们的服务



Zero Waste Program
零废弃物计划



Audit and Consultancy
审计和咨询



Zero Waste Events
零废弃物活动



Extended Producer Responsibility
拓展制造者的责任



Recycled Products
再生产品

Our Wet Waste Facilities 我们的湿废弃物处理设施

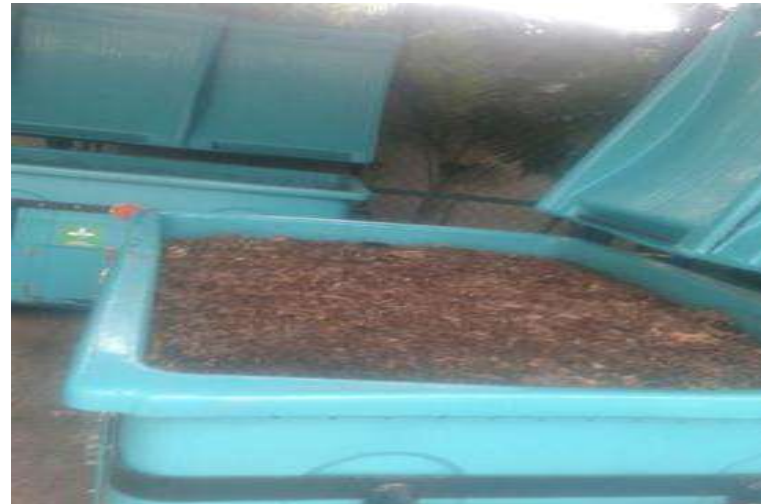
In-house facilities (Kasa Rasa Model)
室内设施 (Kasa Rasa 模型)



On-Site Institutional facilities
现场机构设施



Off-Site Biogas Plant Partners
场外沼气厂合作伙伴



Our Dry Waste Facility 我们的干废弃物处理设施

我们公司拥有的材料回收设备——干燥废弃物的机械化加工厂

SZW owned and Operated Material Recovery Facility- a mechanized processing factory for dry waste



High Segregation Efficiencies 高效分
米



Recovered Waste Baled for Recycling 回收后再利用



Recycled Products再生产品

纸箱&纸筒



纸袋



纸

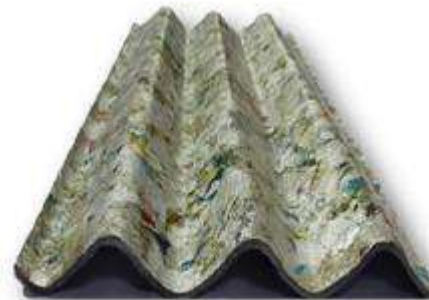


PAPER
IS SHREDDED, PULPED AND
MADE INTO WRITING PAPER,
TOILET PAPER, PACKAGING
MATERIAL AND BOOKS



纸

经过切碎、制浆后被制成书写纸、卫生纸、包装材料和书籍



低密度聚乙烯塑料



高密度聚乙烯塑料



塑料桶



混合塑料



层压材料



PLASTIC
IS BALED, SHREDED, AND
MADE INTO PELLETS, WHICH
CAN THEN BE USED TO MAKE
ANY PLASTIC ITEMS
(COVERS, BOTTLES, BOXES,
GARMENTS & BAGS)



塑料

经过烘烤、切碎后被制成颗粒，可用于制作任何塑料物品（盖子、瓶子、盒子、衣服和袋子）



层压材料
被运入水泥窑



Zero Waste Program Clients 零废弃物计划的客户

60

clients, covering..
个客户，涵盖

6

formats, across..
种形式，覆盖

3

cities...
座城市

each one with an operating model
customised to their individual needs.
针对客户需求量体裁衣，设计一种操作模型



Accel



accenture



Geographic Presence地理分布

Strong in south India and advancing north
印度南部繁荣，向北部市场进军

New Delhi
新德里

Mumbai
孟买

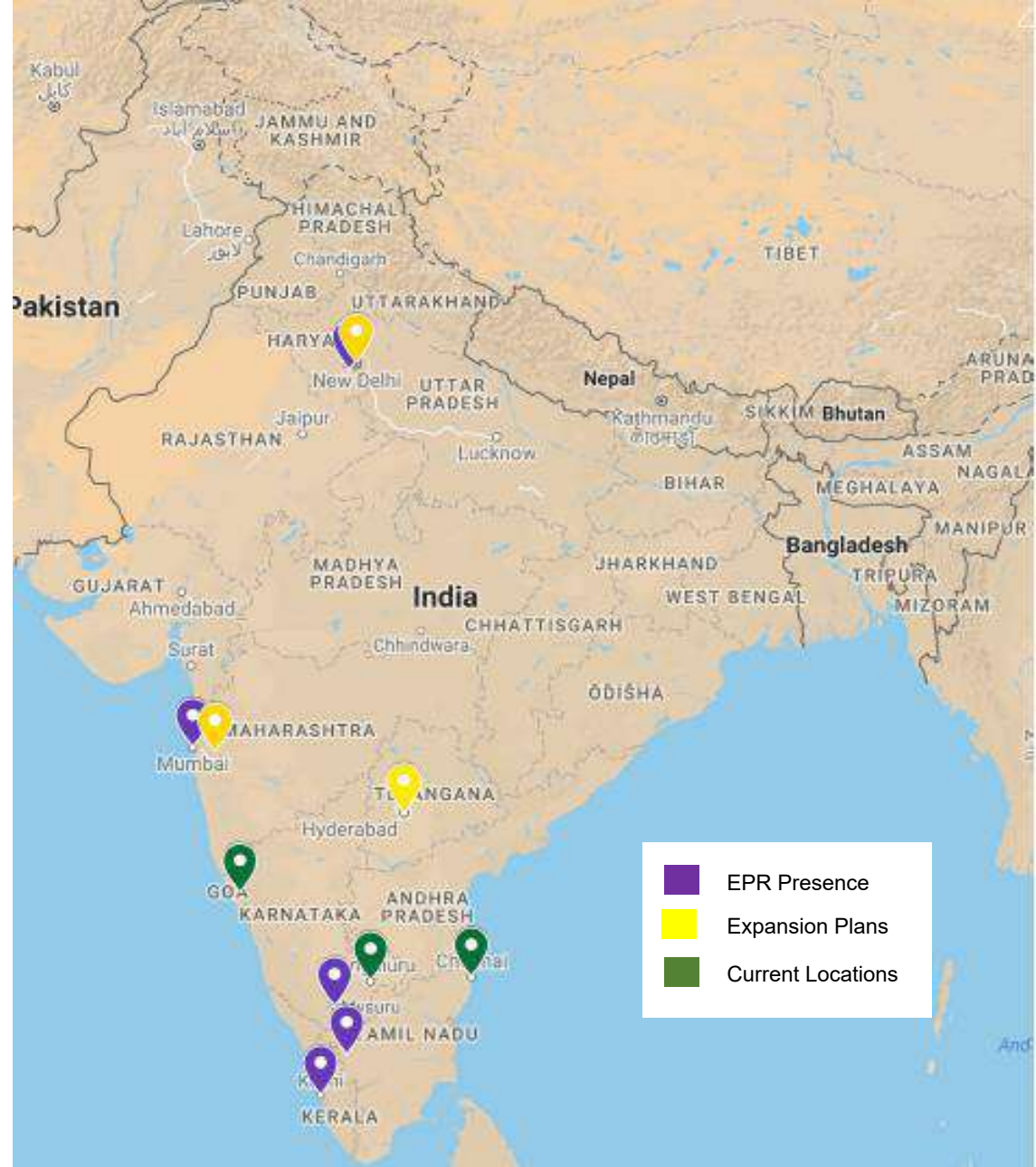
Hyderabad
海德拉巴



Bengaluru
班加罗尔

Chennai
钦奈

Goa
果啊



- EPR Presence
- Expansion Plans
- Current Locations

The Team我们的团队



- **230 permanent employee** strong field team
- 230名正式员工，强大的现场团队
- **Trained in waste management practices**
- 受过废弃物管理实践培训
- **Experienced in dealing with corporate clients**
- 与企业客户打交道很有经验
- **Reliable in terms of availability and security**
- 在可用性和安全性方面可靠



Our Strengths我们的优势

17 years of domain
expertise

17年的行业专业知识

Authorised end
destinations for all waste
streams

所有废物流的授权终端目
的地

Data and technology
driven processes
ensuring transparency

数据和技术驱动的流程确
保透明度

Compliance with all laws
on waste management
and employment

遵守所有关于废弃物管理
和就业的法律

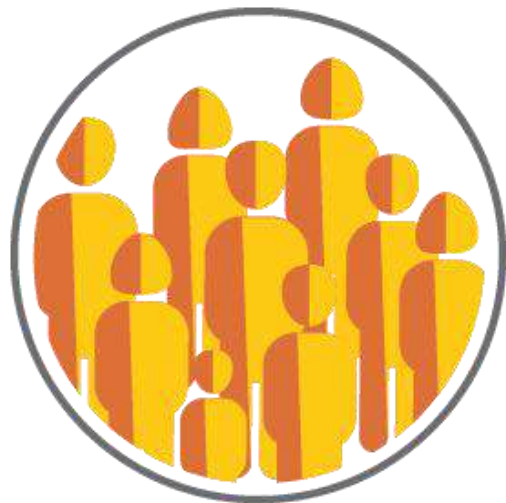
Professional Team

专业的团队

Dignified and safe
careers

有尊严和安全的职业

Our Impact我们的影响

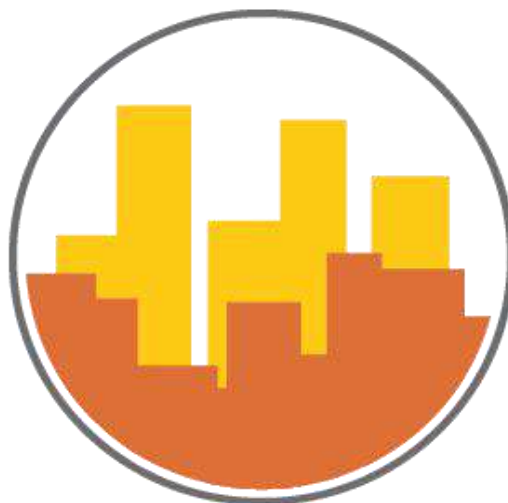


Ecosystem Development

生态系统发展

Reaching 15,00,000
citizens

覆盖15,00,000公民



Environmental Impact

环境影响

Diverting 33,800 tons
of waste from
landfills every year
每年从垃圾填埋场转移
33,800吨废弃物



Social Impact

社会影响

Creating employment for 230
people, of which 85% are women,
from the base of the economic
pyramid
在经济金字塔的基础上为230人提供就
业机会，其中85%是女性