

# Pilot Demonstration in Shenzhen

## AI+ Elderly Care Powers Silver Economy



**Ni Chidan**

**Shenzhen Elderly Health Care College**

- ◆ Observer of National Technical Committee for Standardization of Rehabilitation Technical Aids
- ◆ Member of Guangdong Provincial Technical Committee for Standardization of Elderly Care Service
- ◆ Leading Talent of Public Administration of Guangdong Vocational College
- ◆ Member of Expert Database of Shenzhen Socialist Pilot Demonstration Area
- ◆ Member of Social Development Committee of the Standing Committee of Shenzhen Municipal People's Congress
- ◆ Member of the Social Development Committee of the Eighth People's Congress of Nanshan District



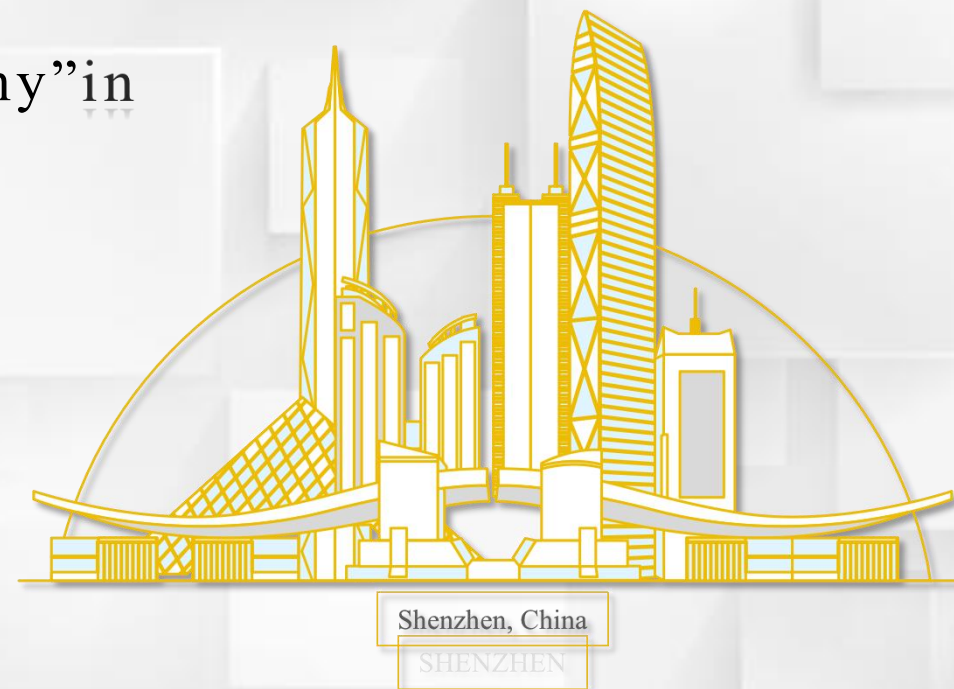
Elderly care robot

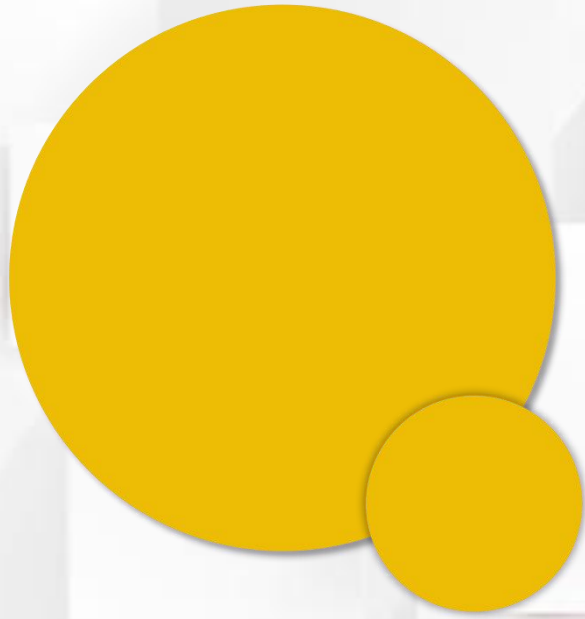
# CONTENTS

PART 1 Goal of Pilot Demonstration of Elderly Care Service

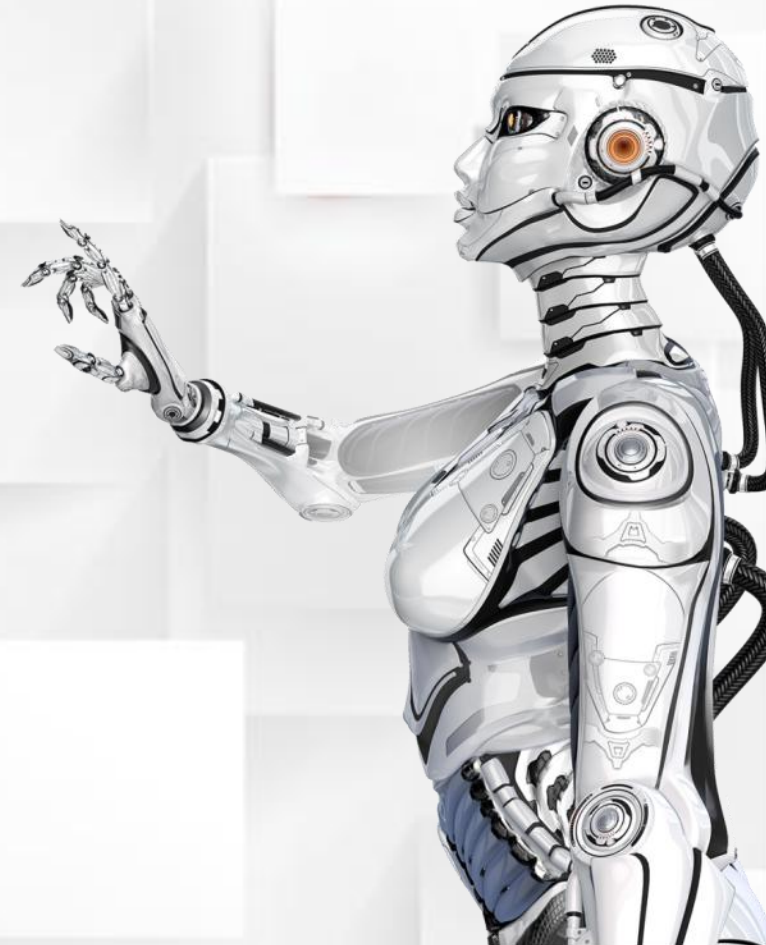
PART 2 Exploration of the AI+ "Silver Economy" Path Based on Technological Edge in Shenzhen

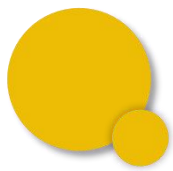
PART 3 Typical Cases of AI+ "Silver Economy" in Shenzhen





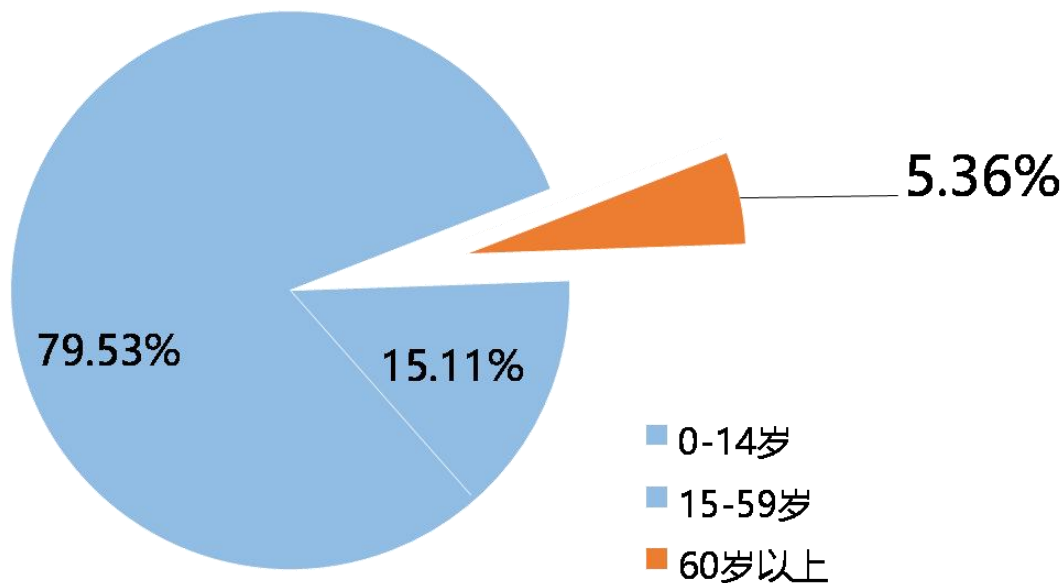
**Part one**  
Goal of Pilot  
Demonstration of  
Elderly Care Service





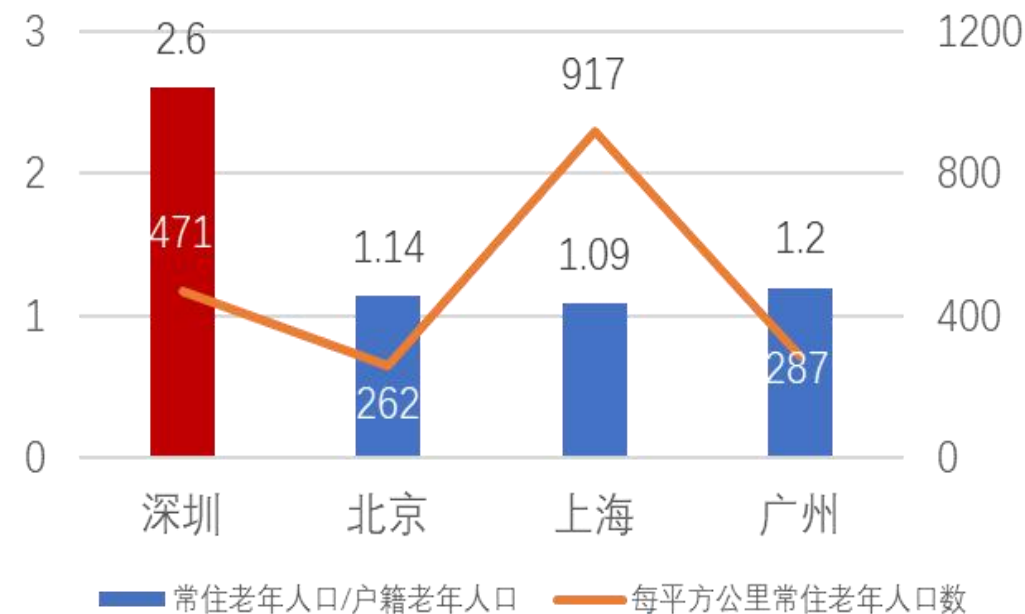
# Status Quo of Aging in Shenzhen

Size: Pre-aging stage on the whole  
Structure: More non-household population than household population  
Distribution: High density of permanent resident elderly population



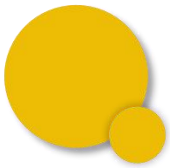
(People aged above 65 take up 3.22%)

## Permanent Resident Population Composition in Shenzhen (1)



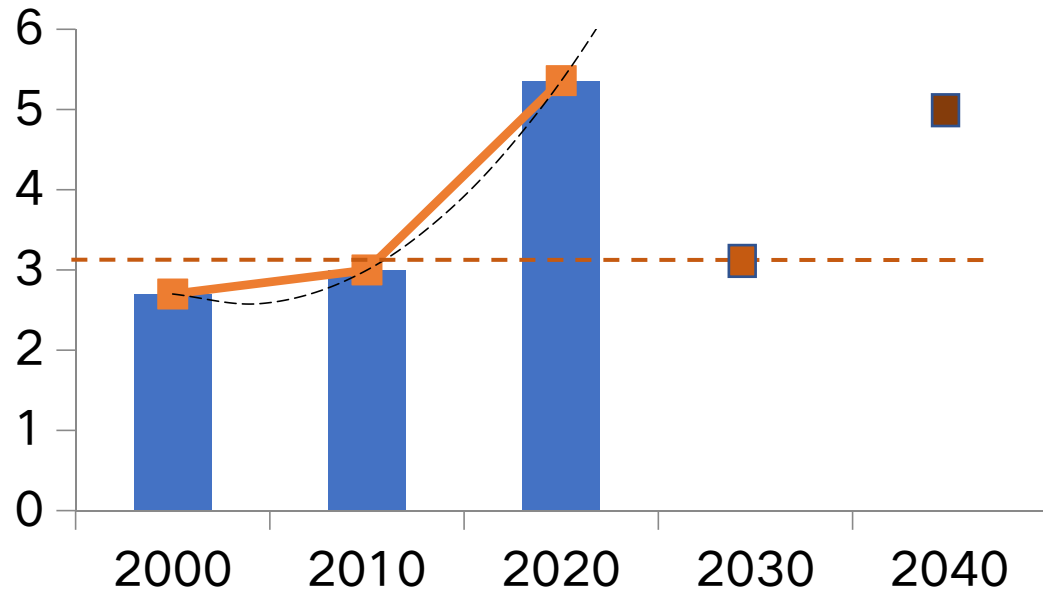
## Comparison of Household Registration Structure and Distribution Density of the Elderly Population in Beijing, Shanghai, Guangzhou and Shenzhen

Note: (1) Data from the Seventh National Population Census



# Aging Trend in Shenzhen

The “whole batch” of Shenzhen builders are getting old, accelerating the population aging process  
The demand for social care is increasing rapidly due to factors like aging, chronic disease and fewer children  
The old have high expectations of high-quality life, with multi-level and multi-type needs



**Growth of the proportion of 60 year old in Shenzhen <sup>(1)</sup>**

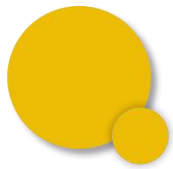
**Table -1 Comparison of Average Life Expectancy between People in Shenzhen and People Nationwide**

	2019	2030
Nationwide	77.3	79
Shenzhen	81.45	83.73

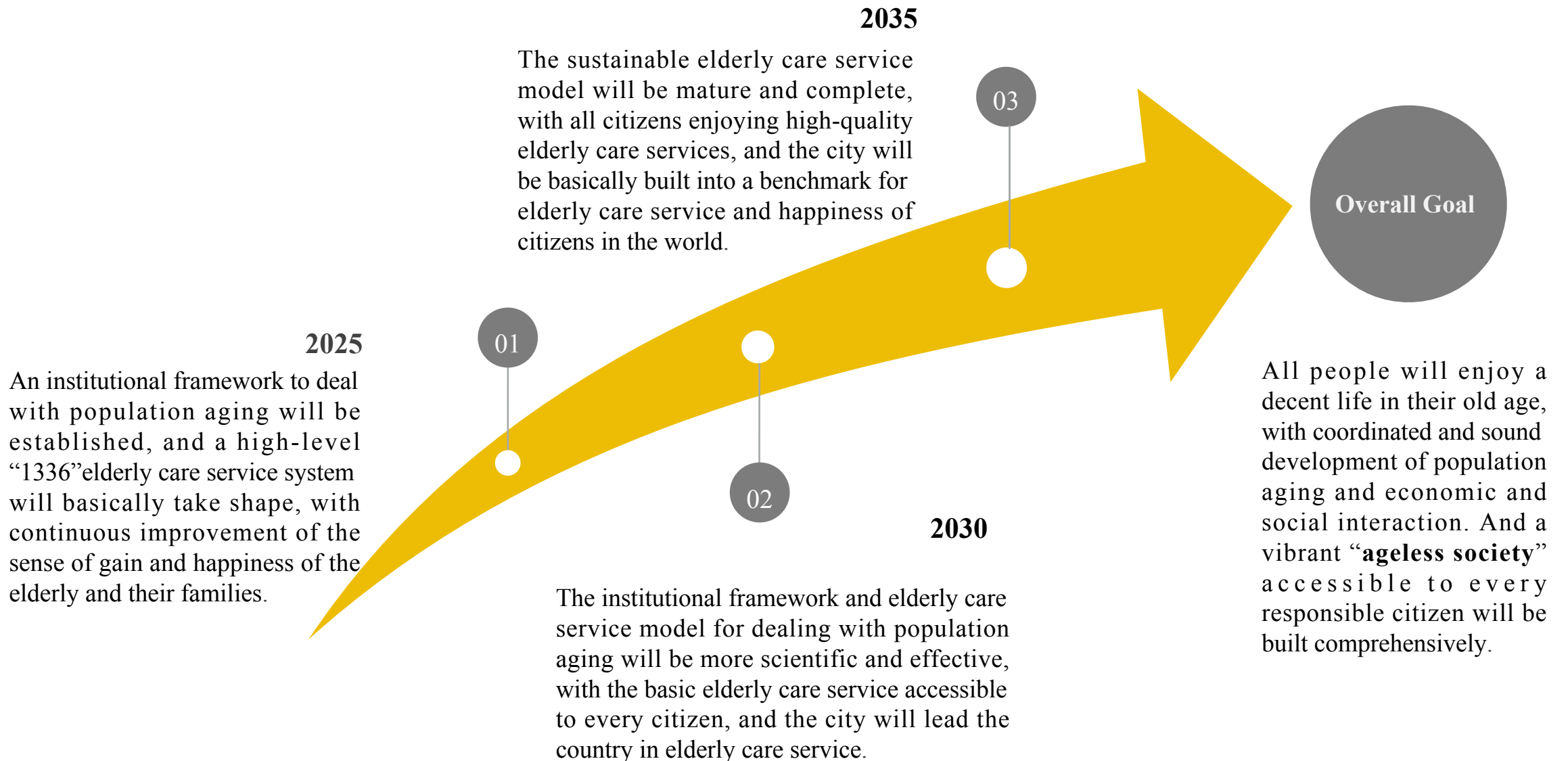
**Table -2 Comparison of Average Household Population between Shenzhen and China**

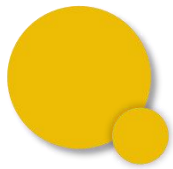
	2010	2020
Nationwide	3.10	2.62
Shenzhen	2.12	2.25





# Development Goal of Elderly Care Service in Shenzhen





# Development Strategy of Elderly Care Service in Shenzhen

## Concept guidance

Strengthening of theoretical research on the active response to population aging to enable the concept guidance of “elderly care service”

## Service guidance

Promotion of the construction of a four-level network for community and home-based elderly care to enable the service guidance of “elderly care service”



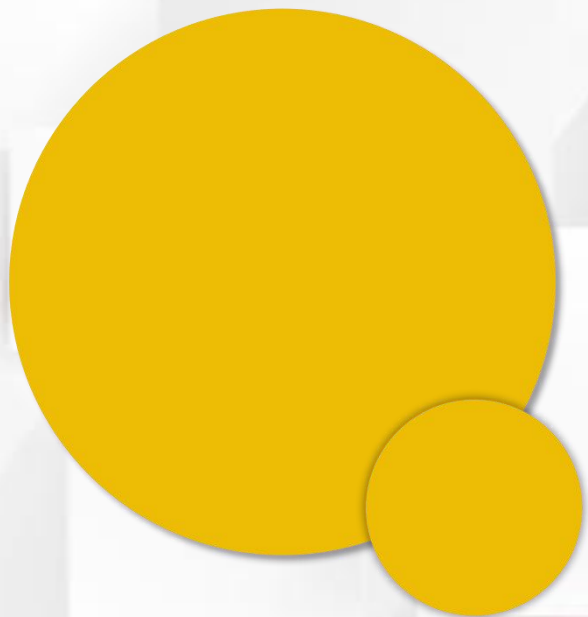
## System guidance

Building of a policy system to actively deal with population aging and enable the system guidance of “elderly care service”

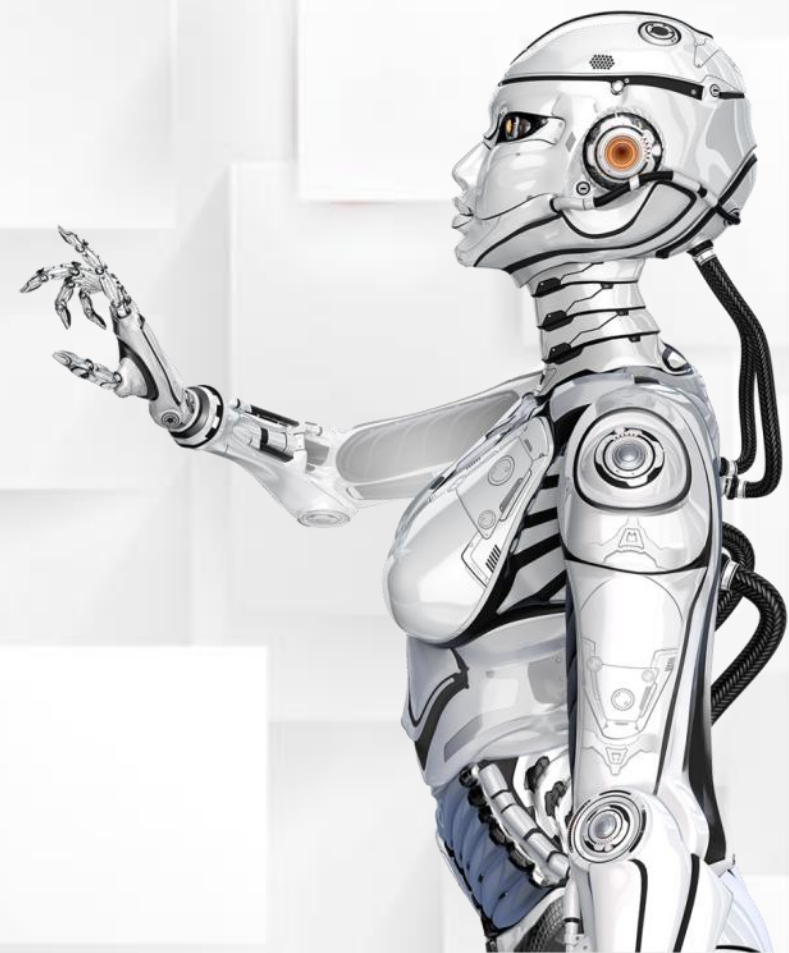
## Technological guidance

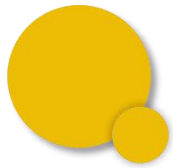
Promotion of technical R&D and application in elderly care to enable the technological guidance of “elderly care service”





**Part two**  
Exploration of the AI+  
“Silver Economy” Path  
Based on Technological  
Edge in Shenzhen





# Urban Technological Innovation Advantages in Shenzhen

## 1. Shenzhen, driven by policies, builds a pilot area for AI innovation and application

In May 2019, the  
*Shenzhen Municipality  
New Generation AI  
Development Action Plan  
(2019-2023)* was issued

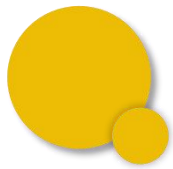
- Tackle problems in key technologies
- Develop industrial clusters
- Integrate real economy
- Support public services
- Pool high-end talent
- Build laws & regulations standards
- Optimize industrial distribution



### Goal in 2023

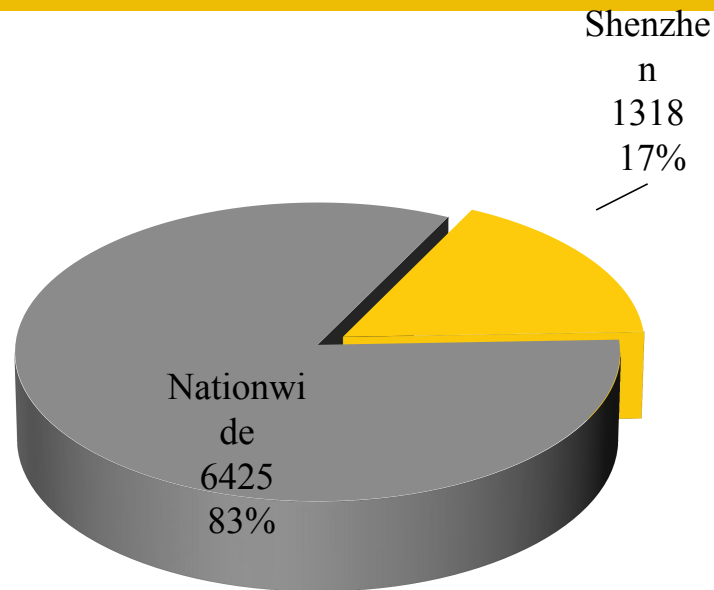
- ◆ More than 20 innovative platforms
- ◆ More than 20 leading enterprises with technological innovation
- ◆ 10 key industrial clusters
- ◆ More than RMB 30 billion in the market size of AI core industry
- ◆ RMB 600 billion in the market size of related industries

To become a world-class pilot area for AI application

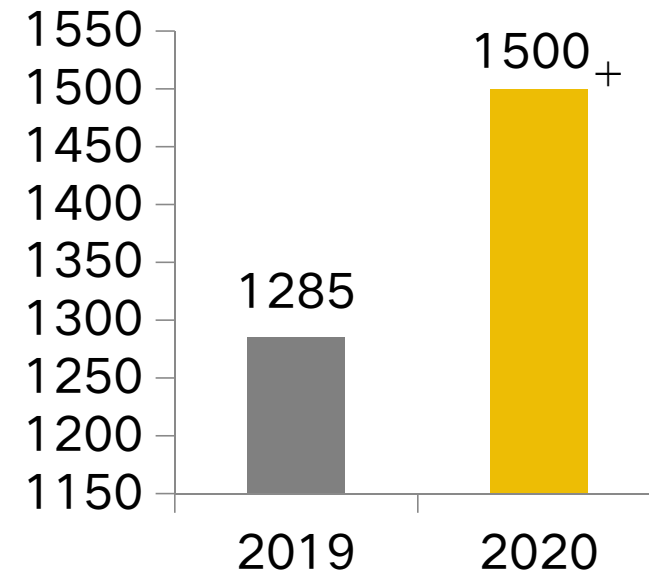


# Urban Technological Innovation Advantages in Shenzhen

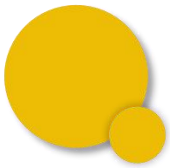
## 2.Outstanding advantages of AI industrial clusters



Number of Shenzhen Artificial Intelligence Enterprises

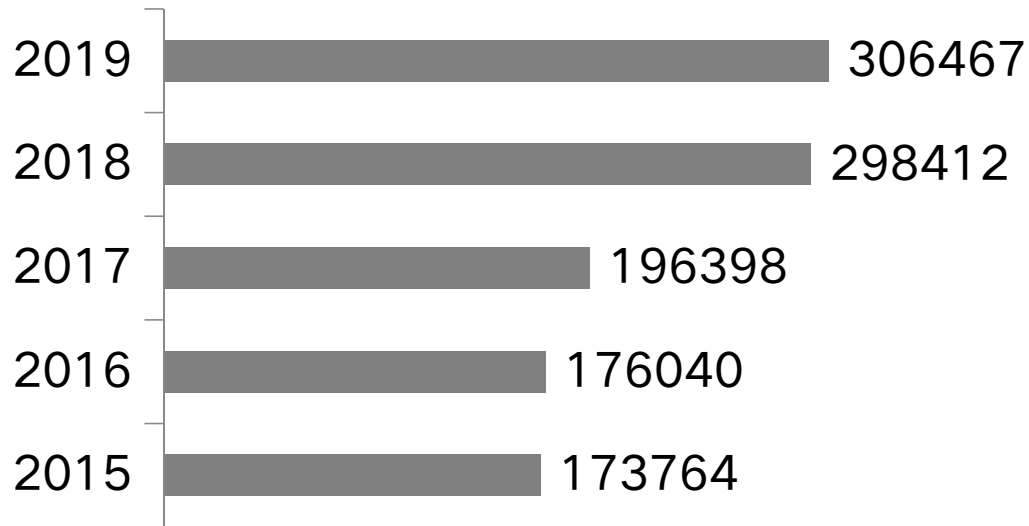


Market Size of AI Industry in Shenzhen (in RMB 100 million)

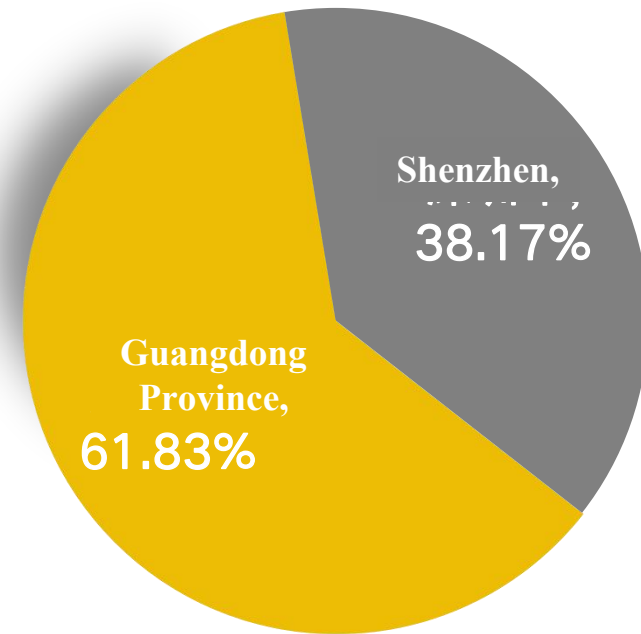


# Urban Technological Innovation Advantages in Shenzhen

## 3. High-end talents are pooled

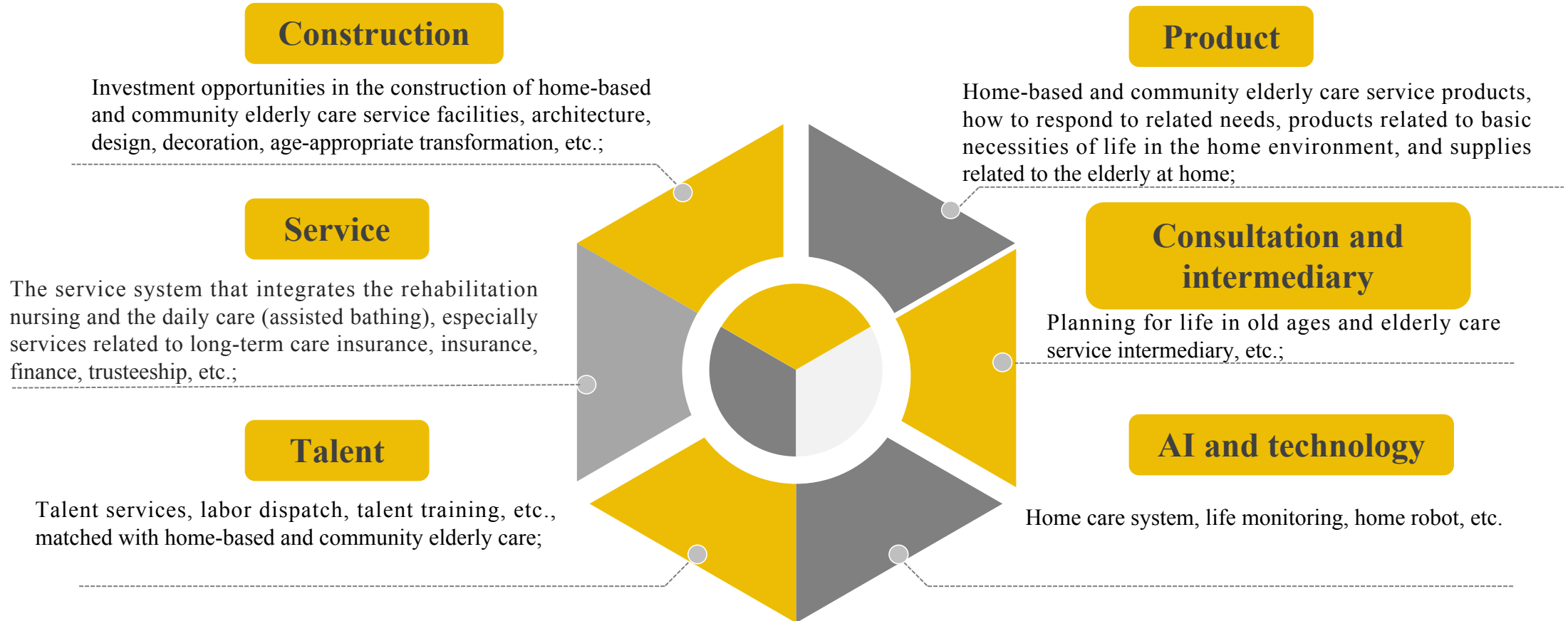


**Full-time Equivalent of R&D  
Personnel in Shenzhen**

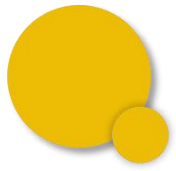


**Ratio of Full-time Equivalent of R&D Personnel  
in Shenzhen to that in Guangdong Province**

# “Silver Economy” Opportunities in the Context of Aging



**In 2024, the market size of China’s elderly care will exceed RMB 10 trillion, among which the value of the smart elderly care service industry will exceed RMB 1 trillion in the future**

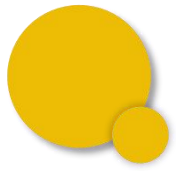


# Scientific and technological application of “Silver Economy” in Shenzhen



1. Promotion of the use of elderly care service card to enable “one card for different purposes in the whole city”





# Scientific and technological application of “Silver Economy” in Shenzhen

- ◆ The “907” comprehensive demonstration project for happiness and health care provides age-appropriate transformation for the elderly, incapacitated and other special elderly people;
- ◆ Establish a closed loop of “intelligent product - matching service - background support”;



**Age-appropriate transformation**



**Intelligent product service matching**

**2. Promotion of the deployment of smart devices to enable the health and safety of the elderly at home**



# Technological support of “Silver Economy” in Shenzhen



Intelligent services



Big Data Application



Whole process supervision



Smart health  
Elderly Care  
Service Industry

Virtual nursing home

New economic growth point



Annual Card of Smart  
Elderly Care Service



Intelligent elderly care products  
+ door-to-door service

Enjoy elderly care service at home and see  
a doctor without leaving bed

Management

Service

Technical support

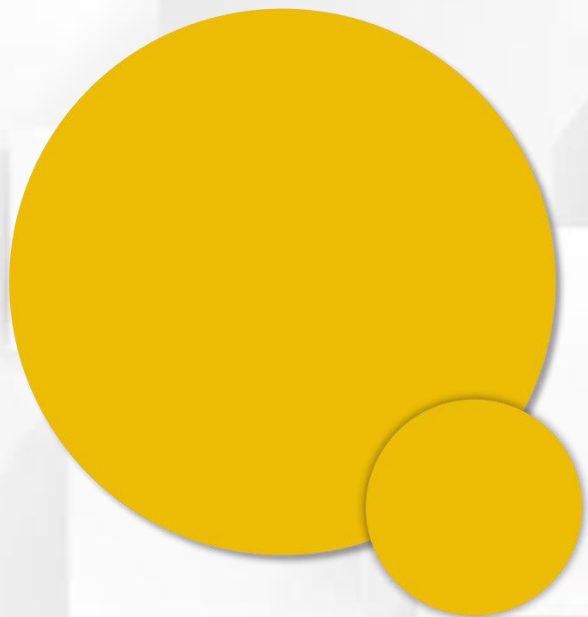


Technology innovation



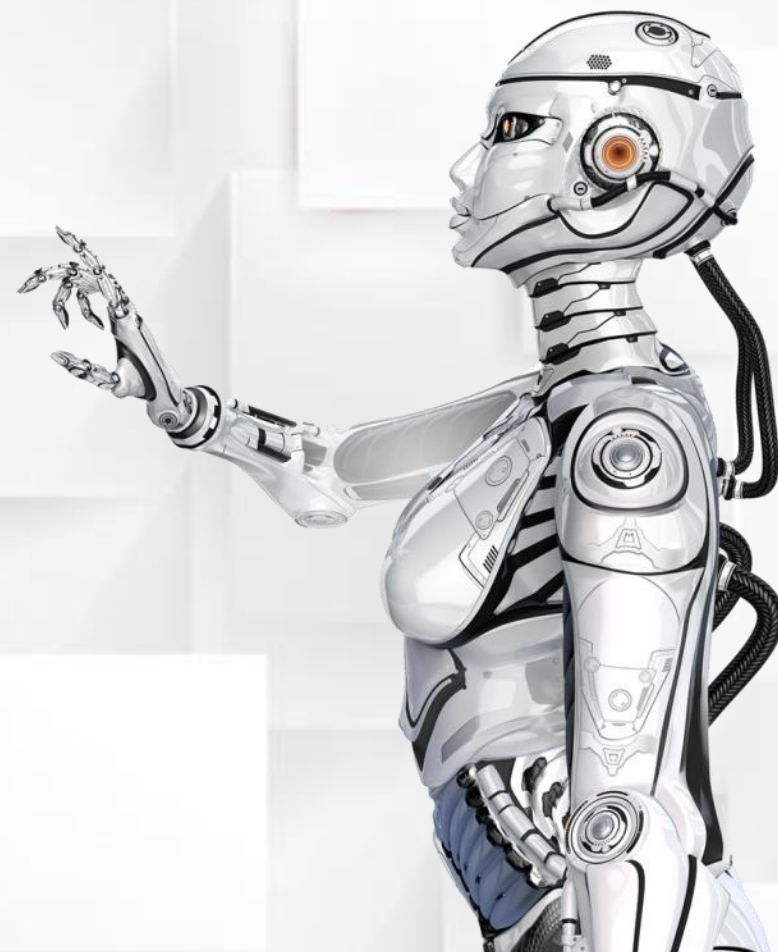
Biological medicine

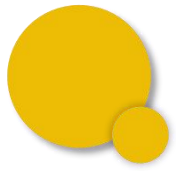
Encourage active innovation



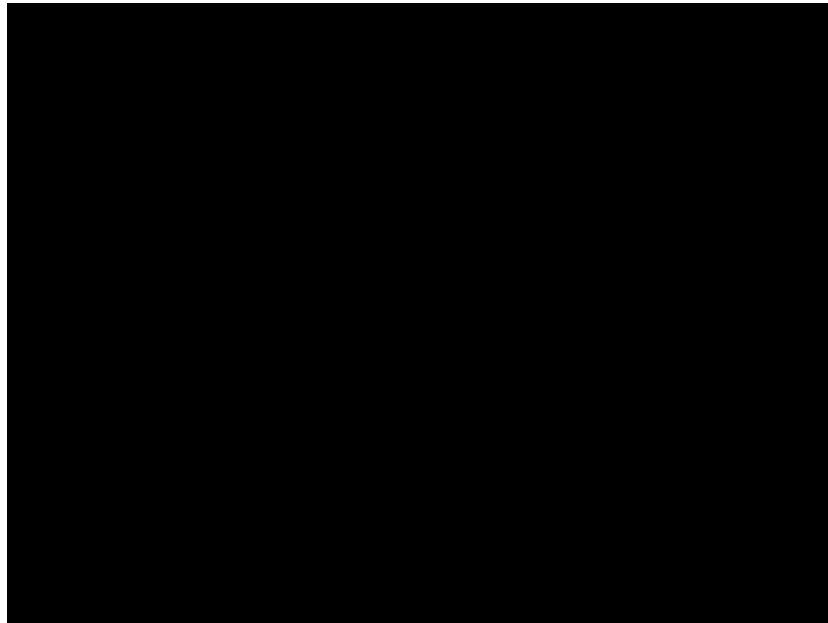
# Part three

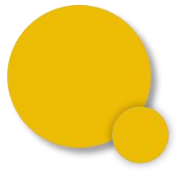
## Typical Cases of AI+ “Silver Economy” in Shenzhen





# AltumView “Match Man” Technology





# AltumView “Match Man” Technology



Visual sensor



CPU



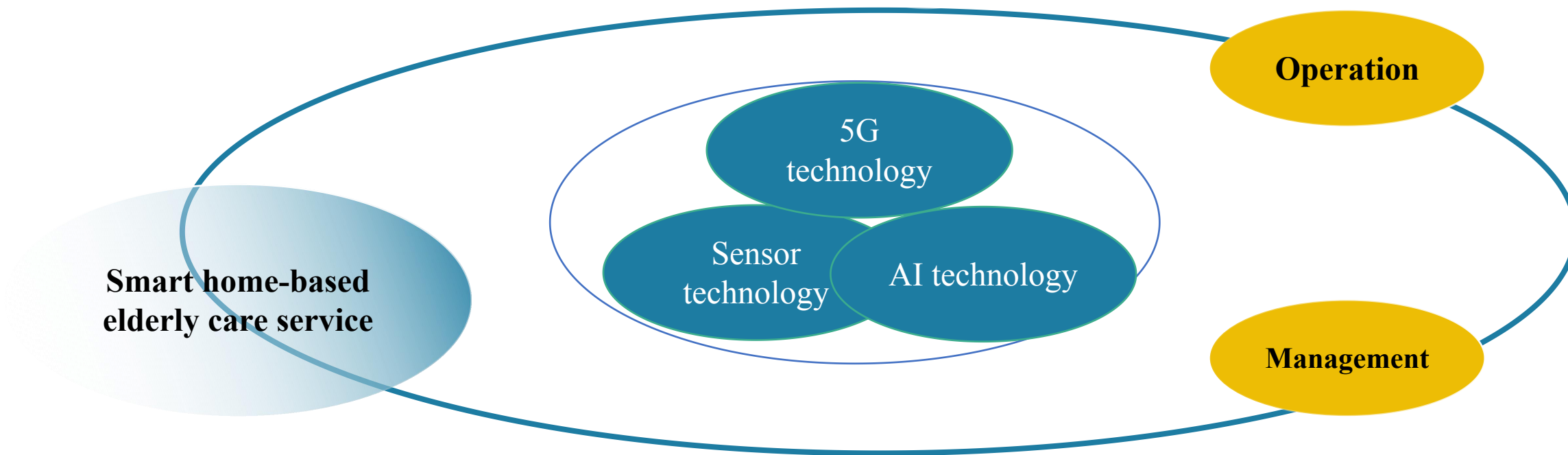
Deep machine learning



Identification of clinical symptoms and chronic diseases

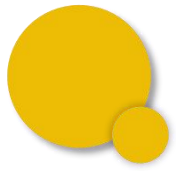


# AltumView “Match Man” Technology

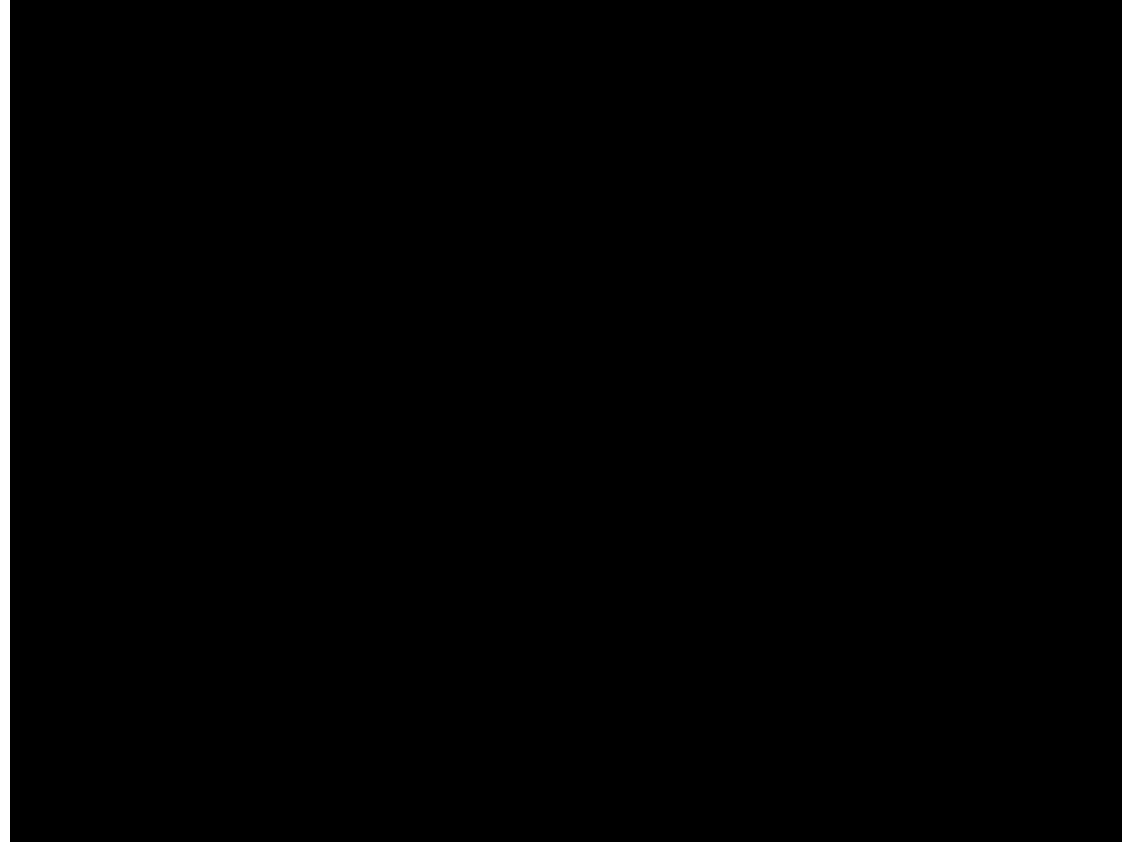


**Build a “5G+ smart home-based elderly care service + operation + management” integrated smart medical care platform**





# **Yantian 24-hour Smart Elderly Care Service Monitoring Platform**



**Technology Powers Elderly Care Service**

**Care Makes Technology more Vital**

