

Elderly Care System Development Forum

A Case Study of Yichang City and International Experience
Exchange
26–28 September 2022



Thailand experience: Public policies and innovation to promote active and productive ageing

Dr Phusit Prakongsai, M.D. Ph.D.
Secretary General, Thailand Geriatric Research
and Development of Thai Elderly (TGRI)

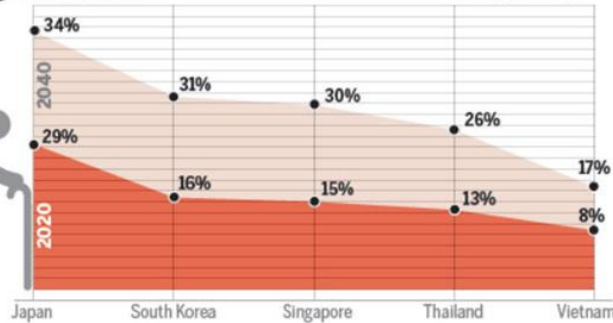




Section IA: Country's situation

Aging in Asia

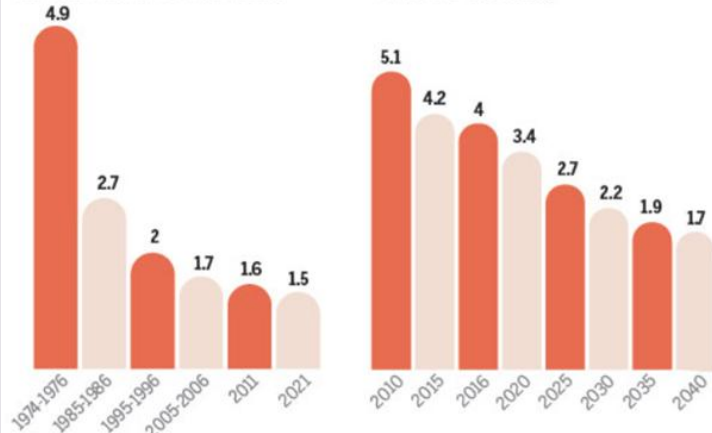
% of population aged 65+



Thailand's challenges

Fertility rate: Average number of children born to a woman over her lifetime

Potential support ratio: Number of workers for one elderly



Sources: UN Population Prospects 2015, Thai Gerontology Research and Development Institute (2012), Thailand's National Economic and Social Development Board

CHINA DAILY

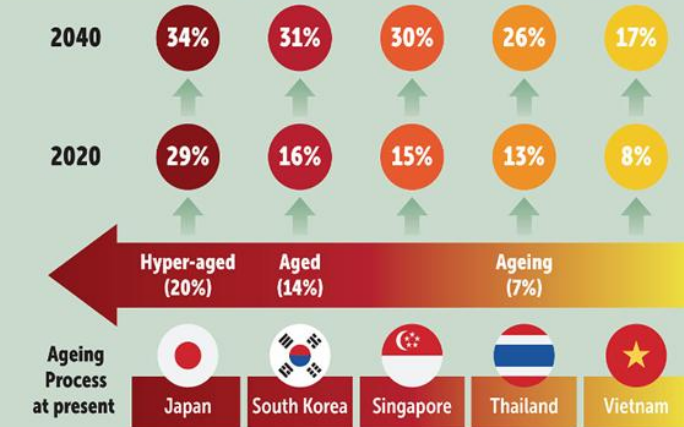
Thailand will become complete aged society in 2022

ASIA THE FASTEST AGEING SOCIETY IN THE WORLD

Thailand's ageing society is just behind Japan's "hyper-aged" society, followed by "aged" South Korea and "ageing" Singapore, and slightly ahead of Vietnam.

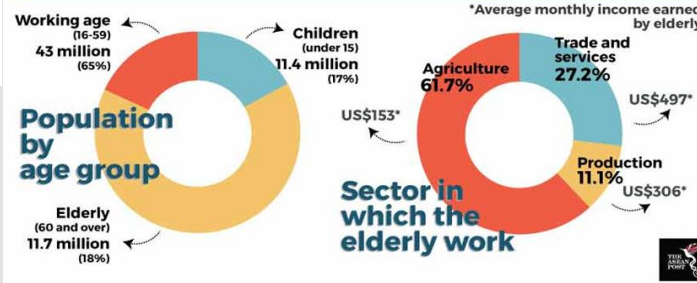


% of population aged 65+



Source: UN Population Prospect, 2015

BANGKOK POST GRAPHICS



THAILAND'S AGEING POPULATION

Thailand's current population

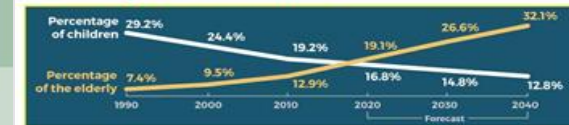
66.2 million

Life expectancy

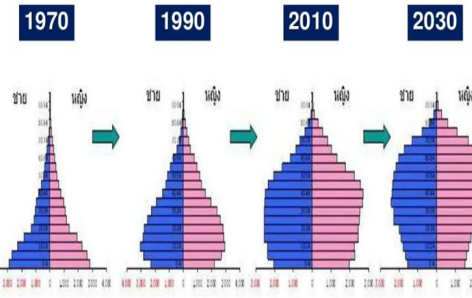
Men 75 years old

Women 82 years old

Elderly VS Children



Thailand in Transition



Number of births and deaths in Thailand: 1937-2019



Source: The Bureau of Registration Administration (BORA), MOI

Number of birth
Number of deaths

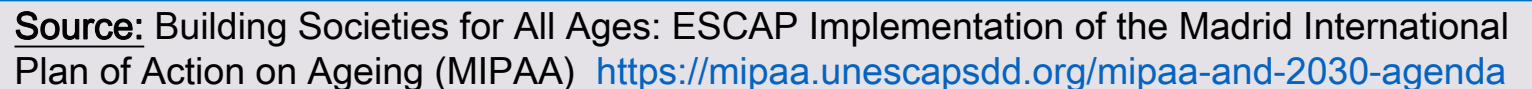


A diagram illustrating the 7 Dimensions of Social Welfare. At the center is a circle labeled "Social Welfare". Surrounding this central circle is a hexagon with seven vertices. Each vertex is connected to the center by an arrow pointing outwards. Each vertex is also labeled with a number in a hexagon (1 through 7). The dimensions are arranged clockwise from the top:

- 1. Education
- 2. Health
- 3. Housing
- 4. Employment and income security
- 5. Judicial process
- 6. Recreation
- 7. General social services

Additional labels are placed around the diagram:

- Social services** is positioned above the top-left corner.
- Social security** is positioned above the top-right corner.
- Social assistance** is positioned below the bottom-left corner.
- Social support and partnership promotion** is positioned below the bottom-right corner.





Section IIA: Country's public policies and innovation

The 2nd National Plan and Strategies on Thai Elderly 2002-2021



- 1) The Social Welfare Promotion Act B.E. 2546 (2003 A.D.) 2) The Act on the Elderly B.E. 2546 (2003 A.D.)



Health sector reform and

UHC
Acute Care



Intermediate Care



Long Term Care



Palliative care
End of Life Care

Continuity of care



Public pension system reform



Social service



Work opportunity





Section IIB: Country's public policies and innovation



The 2nd National Plan and Strategies on Thai Elderly 2002-2021



1) The Social Welfare Promotion Act B.E. 2546 (2003 A.D.) 2) The Act on the Elderly B.E. 2546 (2003 A.D.)



Ageing-in-Place



Age-friendly Environment

Innovations for Thai



Digital literacy and health literacy

Community-based service and local governments



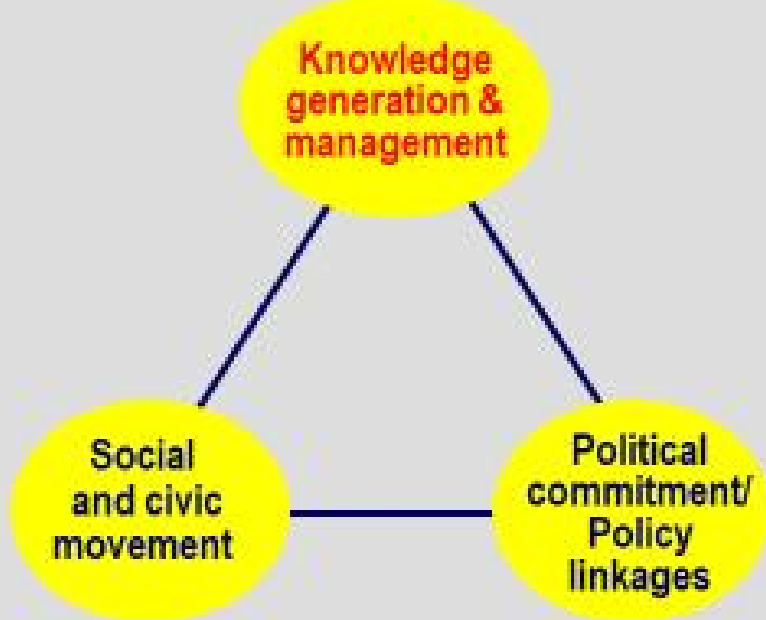
Research related to Social Welfare





Section III: Conclusions and policy recommendations

Tri-power that can move a mountain



- A clear policy direction and framework
- Need research and innovation development
- A paradigm shift about the philosophy of social welfare provision
- Active participation and ownership from local governments and other key stakeholders
- Sufficient financial resource allocation
- Skillful human resources and community volunteers
- Capacity building on digital and health literacy.

Elderly Care System Development Forum

A Case Study of Yichang City and
International Experience Exchange

Online, 26 - 28 Sep 2022



R | K | S | I
ADB-PRC Regional Knowledge Sharing Initiative